

PRIME
design

SERIES

LAMINATE WITH EDGE BAND



Abhiyan Panel India LLP

Corp. & Marketing Office:

B-1107, West Gate, Makarba, Ahmedabad-380051, India.
Email: sales@abhiyangroup.in | Web: www.abhiyangroup.in | Call: 1800 5727 547

Factory Address:

Survey No. 405, Kadadra Road, Dehgam Village, Gandhinagar-382305, Gujarat.

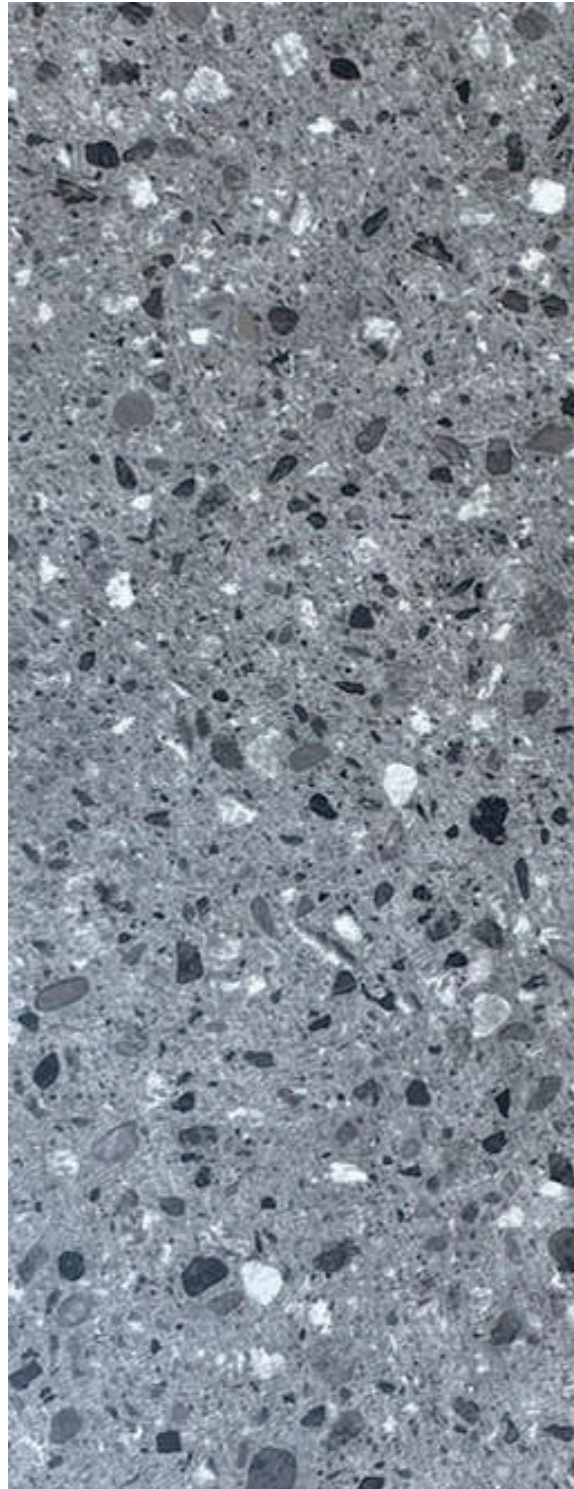


ABOUT US

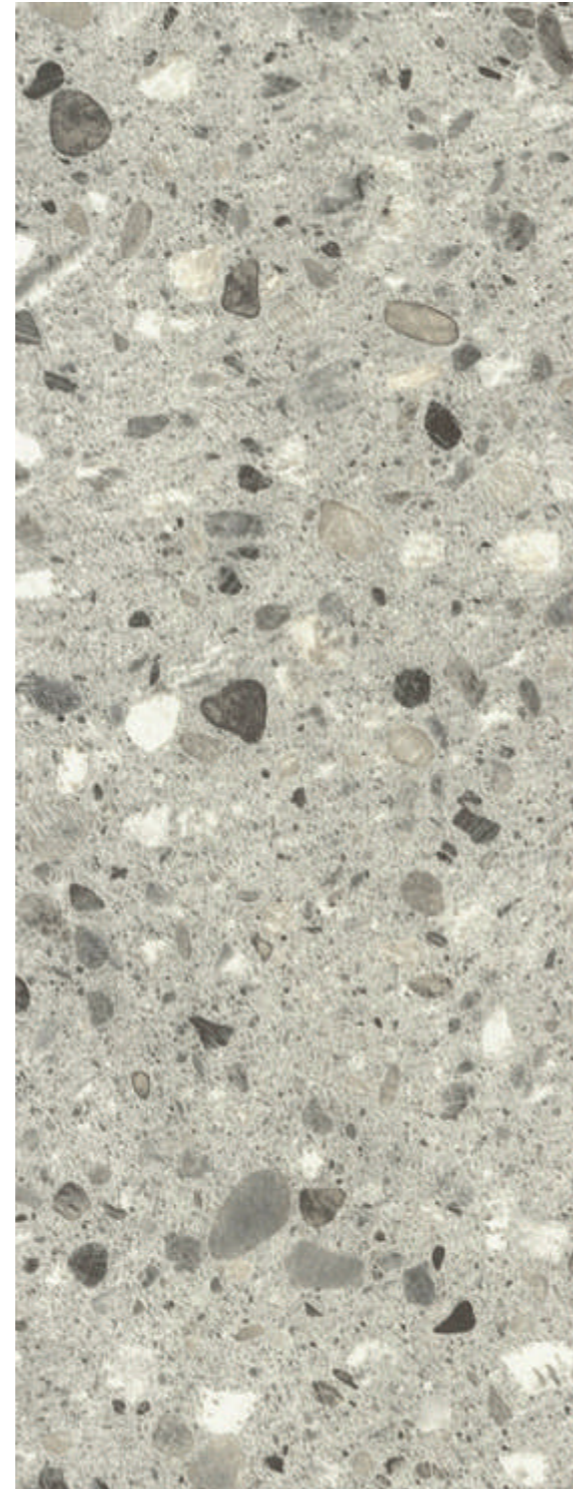
ABHIYAN LAM THE CREATOR OF EXCEPTIONAL AND EXQUISITE MODERN LAMINATES, IS ECSTATIC TO PRESENT THEIR LATEST COLLECTION. FEATURING A WELL CURATED AND SELECTED COLLECTION OF DESIGN AND FINISHES, ABHIYAN LAM HAS TRIED TO COVER ALL THE REQUIREMENTS OF MODERN CONSUMER WITH OFFERINGS THAT COVER COLORFUL LAMINATES TO THE MORE RUSTIC WOODEN LAMINATES, THIS COLLECTION IS WELL ON ITS WAY TO BECOME THE PREFERRED CHOICE OF MODERN HOMEOWNERS, INTERIOR DESIGNERS, ARCHITECTS AND DEVELOPERS ALL AROUND AND ABHIYAN LAM IS DEDICATED TO FURTHER EXPAND AND IMPROVE THIS COLLECTION IN THE COMING YEAR

PRIME DESIGN SERIES





A328 - MT
TERRAZO DARK (NEW)



A329 - MT
TERRAZO LIGHT (NEW)



A327 - MT
KALHARI DARK (NEW)



A326 - MT
KALHARI LIGHT (NEW)

SOLID COLOUR

A SURFACE THAT EXCUTES GRACE & GRANDEUR LIKE
NONE OTHER, ENJOY ITS EXCELLENCE AND POISE FOREVER.



A112 - SF
OFF WHITE (8103)



A191 - SF
LIGHT GREY (8104)



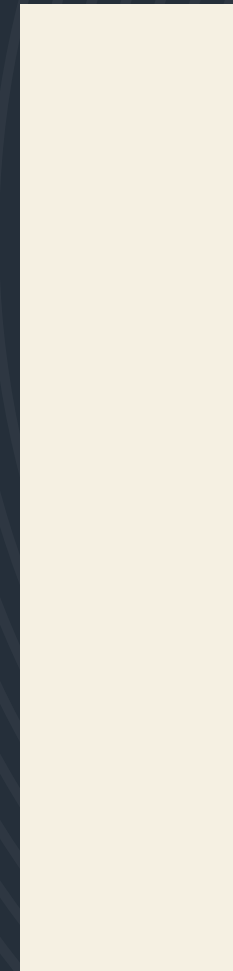
A193 - SF
CHARCOAL GREY (8107)



A141 - SF
COOL GREY (NEW)



A199 - SF
BLACK (8106)



A131 - SF
LIGHT BEIDGE (NEW)



A133 - SF
DARK BEIDGE (NEW)



A192 - SF
DARK GREY (NEW)

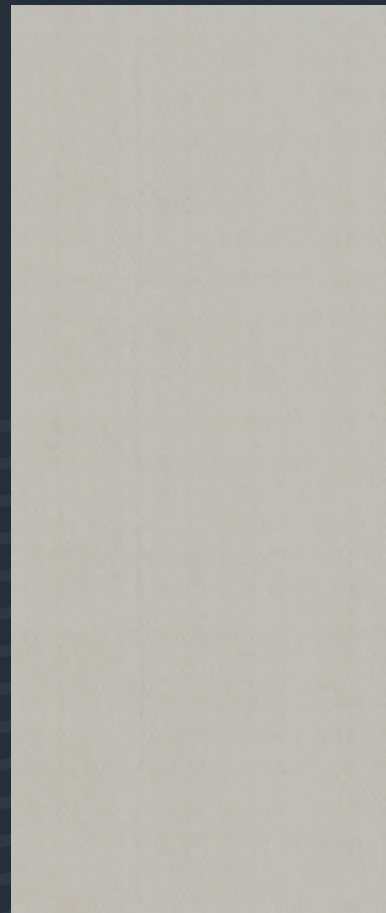


A124 - SF
CERAMIC GREY (NEW)

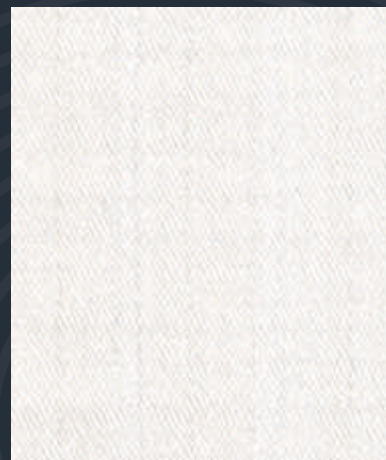


A117 - SF
NICKLE GREY (8117)

Versatile



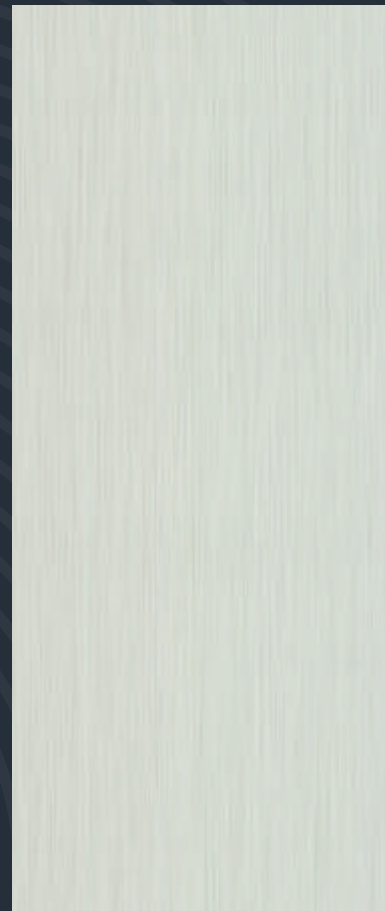
A506 - SF
DUSK FAB (NEW)



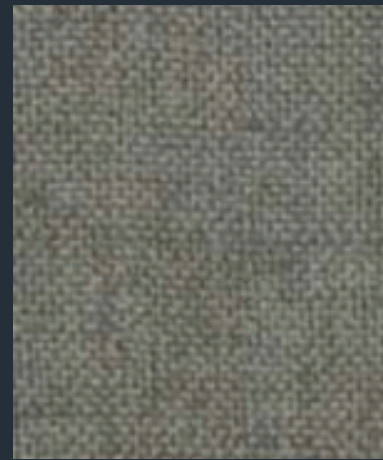
A505 - SF
SNOW FAB (NEW)



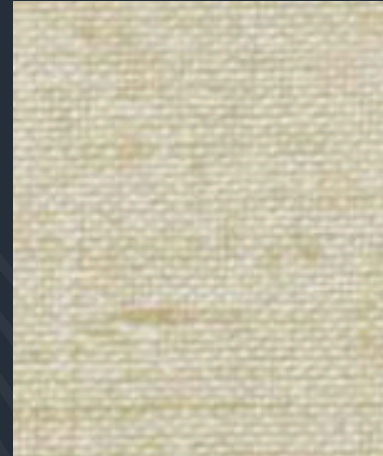
A515 - SF
OXFORD LIGHT (8304)



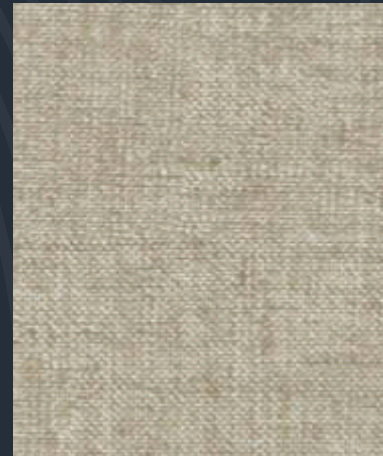
A504 - SF
BLENDED FAB (NEW)



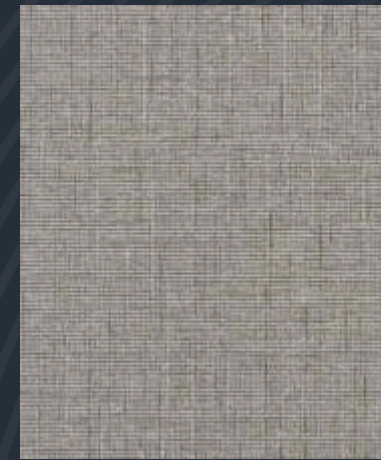
A501 - SF OXFORD DARK (8301)



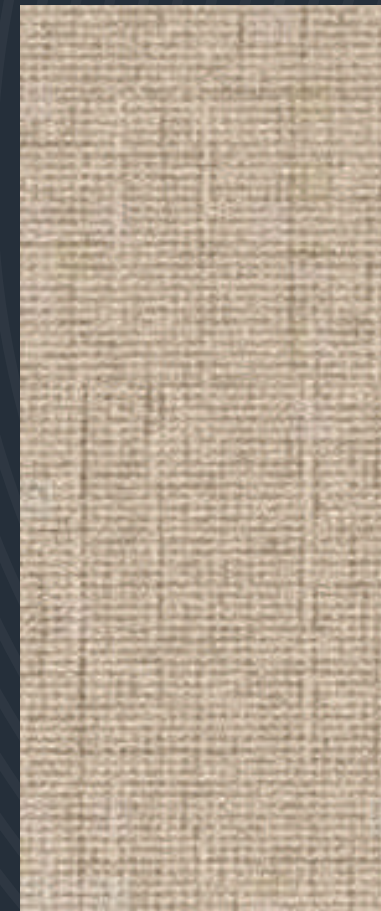
A503 - SF OXFORD CREAM (8303)



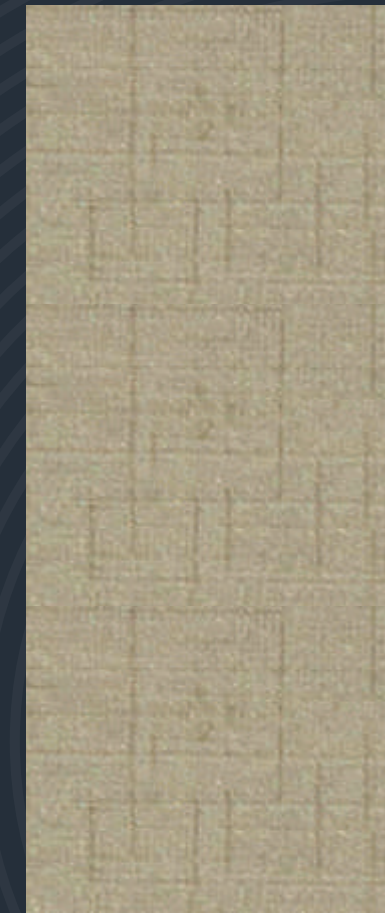
A502 - SF
OXFORD BROWN (8302)



A540 - SF
FAB GREY (8318)



A541 - SF
FAB CREAM (8319)



A544 - SF
CAMBRIC (8321)



A510 - SF
LINEN (8320)



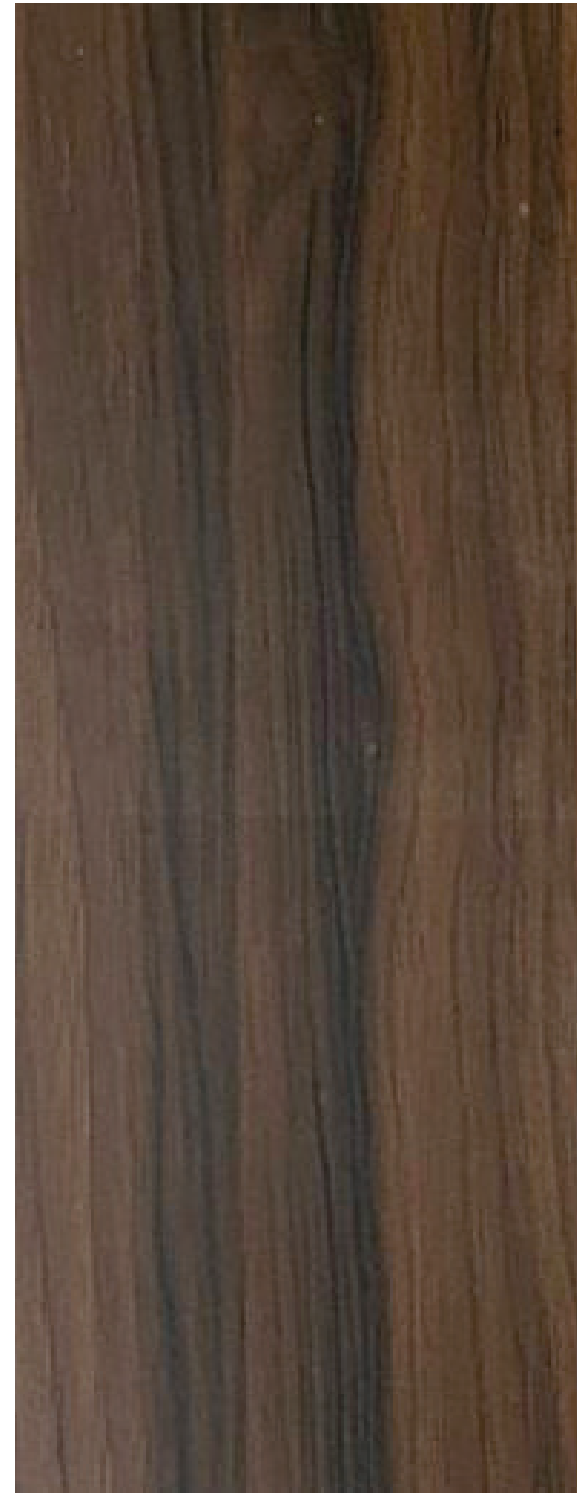
A526 - SF
CAMBRIC DARK (8315)



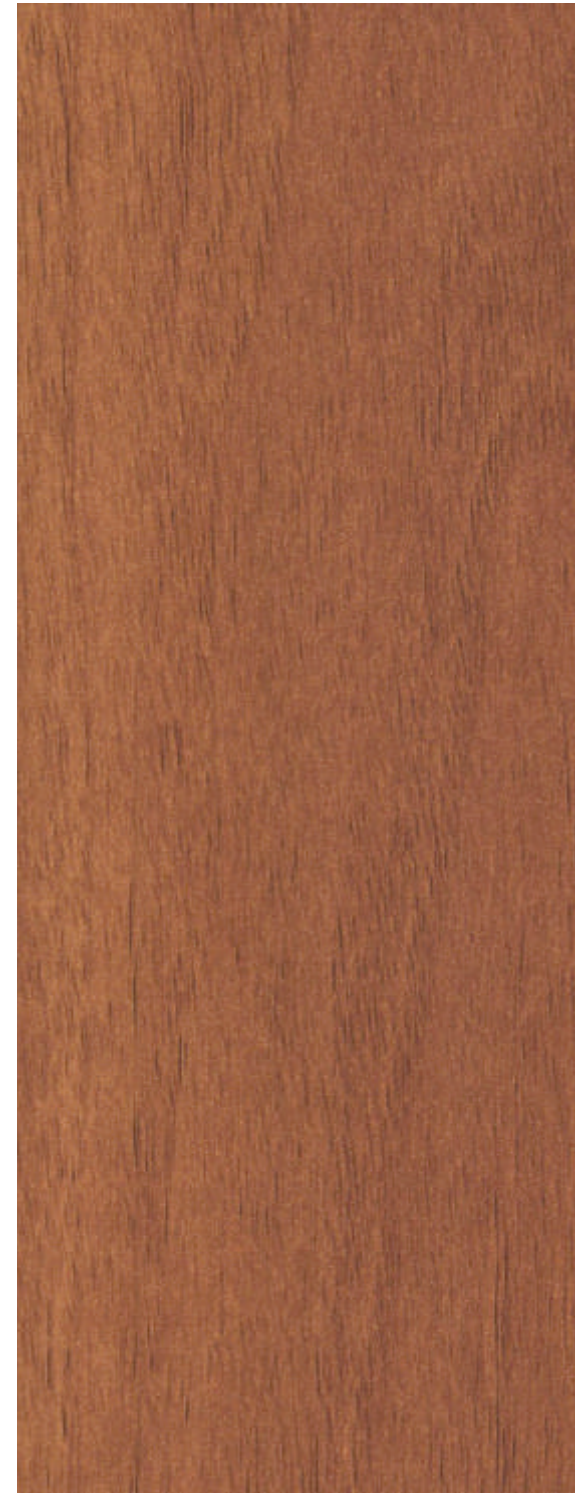
A525 - SF
CAMBRIC LIGHT (8314)



A750 - SF
URBAN TEAK (8416)



A786 - SF
VIOLA (NEW)



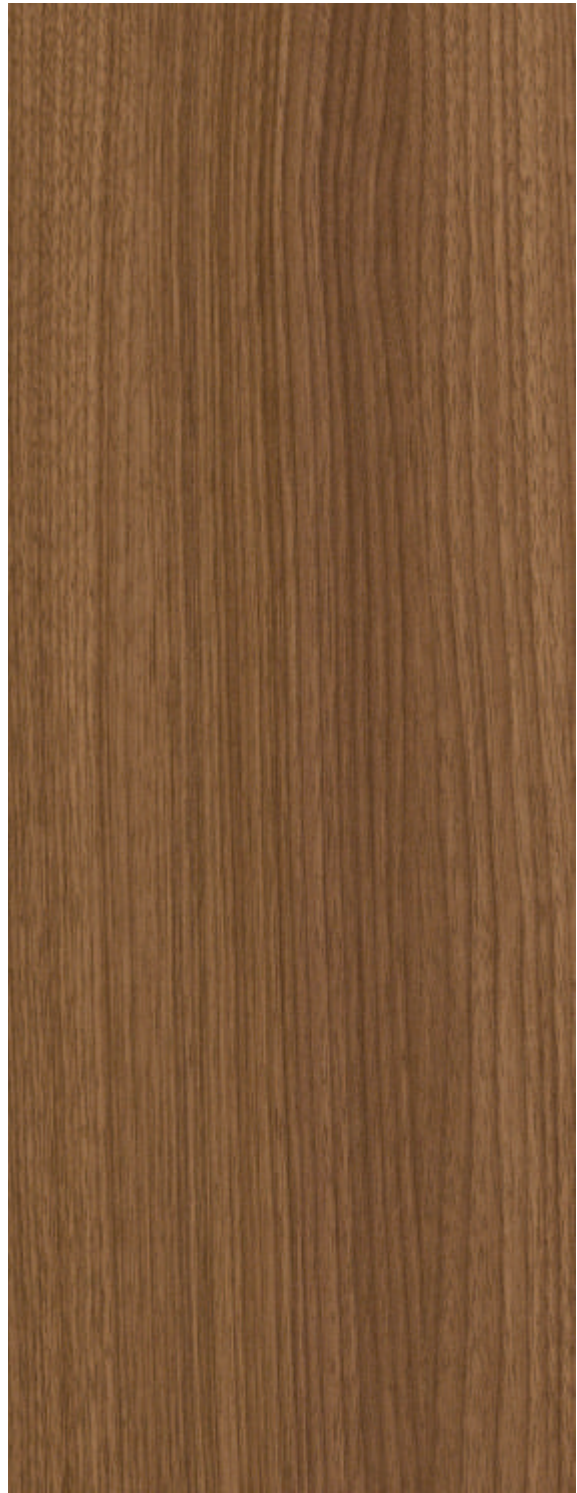
A784 - SF
MAGAS WALNUT (NEW)



A785 - SF
HORN BEAM (NEW)

WOODEN

ENAMOR OF WOOD THAT SPEAKS
EXTRAVAGANCE OF NATURE.



A725 - SF
SMOKED OAK (8411)



A726 - SF
STRAIGHT OAK (8412)



A746 - SF
MOLDAU ACACIA LIGHT (8414)

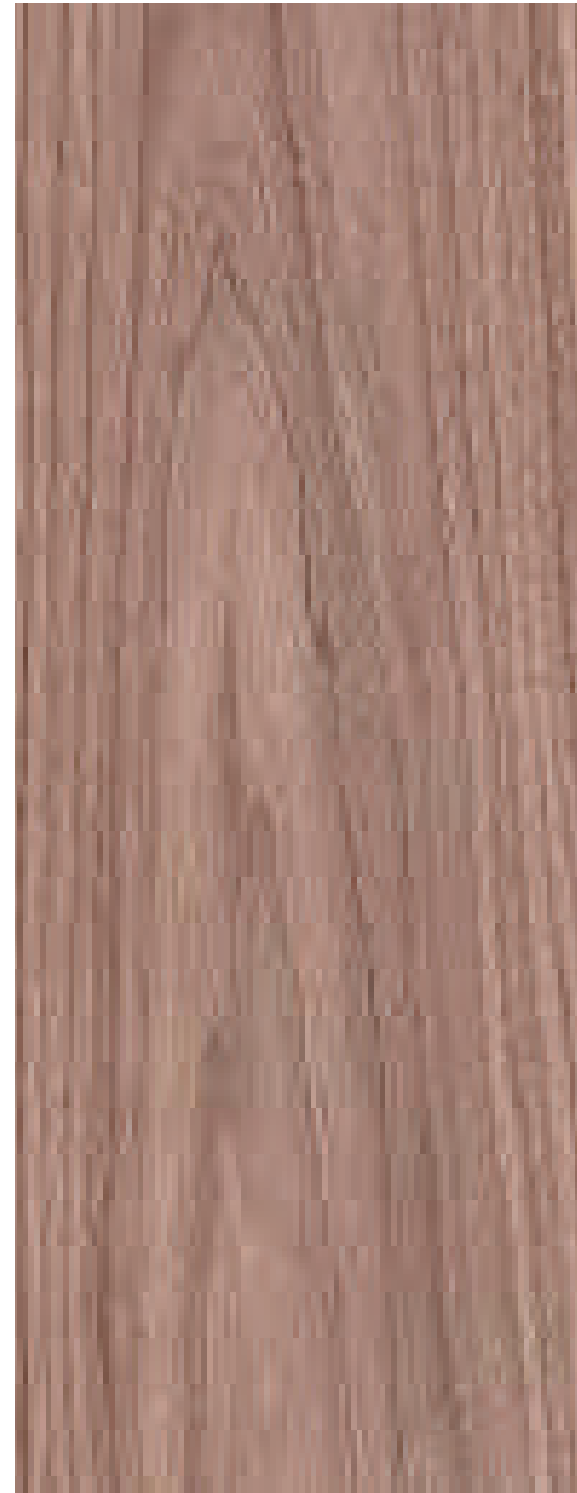


A747 - SF
MOLDAU ACACIA DARK (8415)

Stylish



A751 - SF
NATURAL OAK (8417)



A759 - SF
AMERICAN WALNUT (8459)



A752 - SF
NIAGRA OAK (8452)



A753 - SF
NIAGRA OAK DARK (8453)

DESIGN NO.	DESIGN NAME	PAGE NO	REHAU CODE	E3 CODE
A102	BONE WHITE	4	110169	-
A112	OFF WHITE	3	112135	1002
A117	NICKLE GREY	4	112231	1052
A124	MAGNOLIA	4	110109	1046
A131	LIGHT BEIDGE	4	110135	1033
A133	DARK BEIDGE	4	75635	1021
A141	COOL GREY	3	112130	1051
A191	LIGHT GREY	3	75709	-
A193	CHARCOAL GREY	3	112147	1049
A199	BLACK	3	112136	1006
A326	KALHARI LIGHT	2	-	-
A327	KALHARI DARK	2	-	-
A328	TERRAZO LIGHT	1	-	-
A329	TERRAZO DARK	1	-	-
A501	OXFORD DARK	5	701P	-
A502	OXFORD BROWN	5	-	2089
A503	OXFORD CREAM	5	-	-
A504	BLENDED FAB	5	39502	-
A505	SNOW FAB	5	-	-
A506	DUSK FAB	5	-	-
A510	LINEN	6	-	-
A515	OXFORD LIGHT	6	-	-
A525	CAMBRIC LIGHT	6	555P	-
A526	CAMBRIC DARK	6	-	-
A540	FAB GREY	6	-	2035
A541	FAB CREAM	6	-	2034
A544	CAMBRIC	6	433P	2025
A725	SMOKED OAK	9	067P	-
A726	STRAIGHT OAK	9	675P	-
A746	MOLDAU ACACIA LIGHT	10	695P	2007
A747	MOLDAU ACACIA DARK	10	224P	2006
A750	URBAN TEAK	7	059P	2043
A751	NATURAL OAK	11	058P	2019
A752	NIAGRA OAK	12	770P	-
A753	NIAGRA OAK DARK	12	-	-
A759	AMERICAN WALNUT	11	-	2080
A784	MAGAS WALNUT	8	236P	-
A785	HORN BEAM	8	420P	-
A786	VIROLA	7	-	-

NOTE :- THESE ARE SUGGESTED MATCHES FROM RESPECTIVE BRAND, PLEASE VERIFY PHYSICAL SAMPLE BEFORE PLACING THE ORDER.

TECHNICAL SPECIFICATIONS

PROPERTIES	SPECIFIED VALUES AS PER IS:2046-1995, TYPE S, VGS	ABHIYAN CONFORMS
Product		
High Pressure Decorative laminated sheets		
Dimensional Stability at deviated temperature		
- Longitudinal (%)	0.55 (maximum)	0.35 (maximum)
- Transverse (%)	1.025 (maximum)	0.75 (maximum)
Dimensional Stability at 20° C		
- Longitudinal (%)	0.375 (maximum)	0.275 (maximum)
- Transverse (%)	0.60 (maximum)	0.49 (maximum)
Resistance to dry heat 180° C	Not Worse Than Grade 4	Passed
Resistance to immersion in boiling water		
- Mass increase (%)	10.0 (maximum)	6.5 (maximum)
- Thickness increase (%)	11.8 (maximum)	7.8 (maximum)
- Appearance	Not Worse Than Grade 4	Passed
Resistance to impact by small diameter ball	20 N (minimum)	25 N (minimum)
Resistance to cracking	Not Worse Than Grade 4	Passed
Resistance to scratching	2 N (minimum)	3 N (minimum)
Resistance to staining	Not Worse Than Grade 5	Passed
Resistance to cigarette burns	Not Worse Than Grade 4	Passed
Resistance to steam	Not Worse Than Grade 4	Passed
Resistance to colour change (wool standards)		
- In Xenon arc light	Not Worse Than Grade 6	Passed
- In enclosed Carbon arc light	Not Worse Than Grade 5	Passed
Appearance	Should Be Free From Foreign Particles	Passed

FEATURES

A complete dimensionally stable product with the unique resistance power against Surface Wear, Any kind of Stain, Immersion in Boiling Water Scratches, Cigarette Burns

PRODUCT SPECIFICATIONS		
Product	Size	Finish
Decorative Laminate Sheets	2440 x 1220 mm	Matt, SF

Maintenance: Clean with mild soap solutions or household detergent, abrasive cleaners should not be used. It is recommended for vertical use only. Avoid direct sunlight.

Resistance: To surface wear, immersion in boiling water, dry heat, impact by small dia, ball, cigarette burns, staining, scratches, color change in xenon light.

STORAGE

Vertical storing is not recommended for liner laminates. Protect it from water & moisture & never store directly on the floor or touching the wall. Kindly store the sheets horizontally with a thick board at top and bottom to avoid any damage.

NOTE:

Please do not use plywood with high moisture content, uneven surface and inferior quality as it will lead to air bubbles between plywood & laminates. Insufficient quality or inferior quality of adhesive will also lead to delamination or air bubbles. The company will not entertain any complaint in this regards.